

Gainesville-Haymarket Extension Study

Prince William County
Chamber of Commerce

November 17, 2015





**WHAT IS THE GAINESVILLE-
HAYMARKET EXTENSION PROJECT?**

VRE Overview

- Commuter rail system serving Washington, DC and Northern Virginia
- Two lines, 90 miles
- 4.5 million annual passengers
- A partnership of NVTC and PRTC
- Vital capital and operating support from the Commonwealth of Virginia



Our Importance to Northern Virginia

- Part of a balanced transportation system
- Reduces peak congestion
- An efficient and effective means of adding peak travel capacity
- Investment pays long-term dividends for generations





WHY EXTEND VRE?

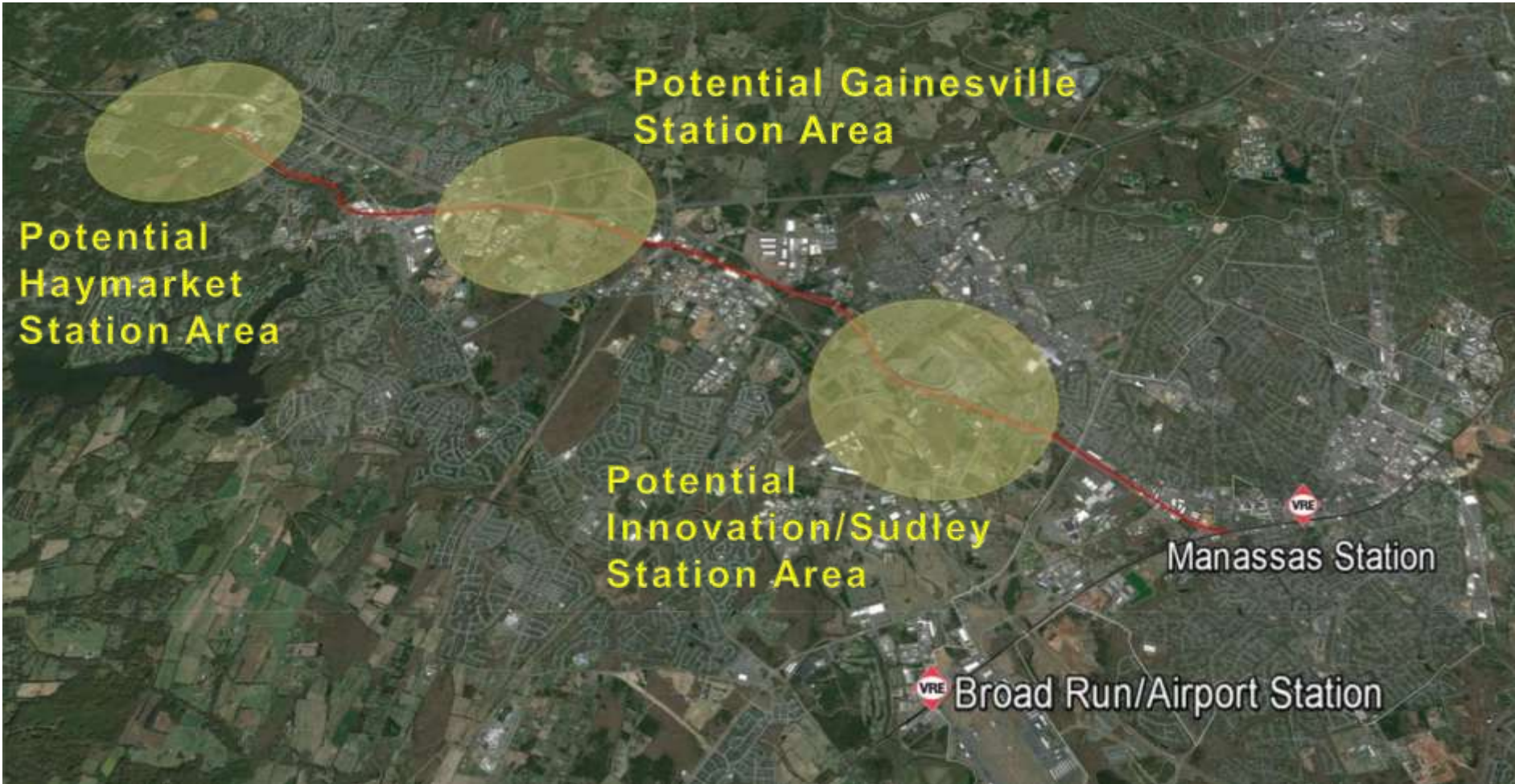
Why Extend VRE?

- I-66 corridor is the focus of Virginia strategic investment
- VRE provides additional choice and capacity
- Growing congestion driven by continued rapid land development



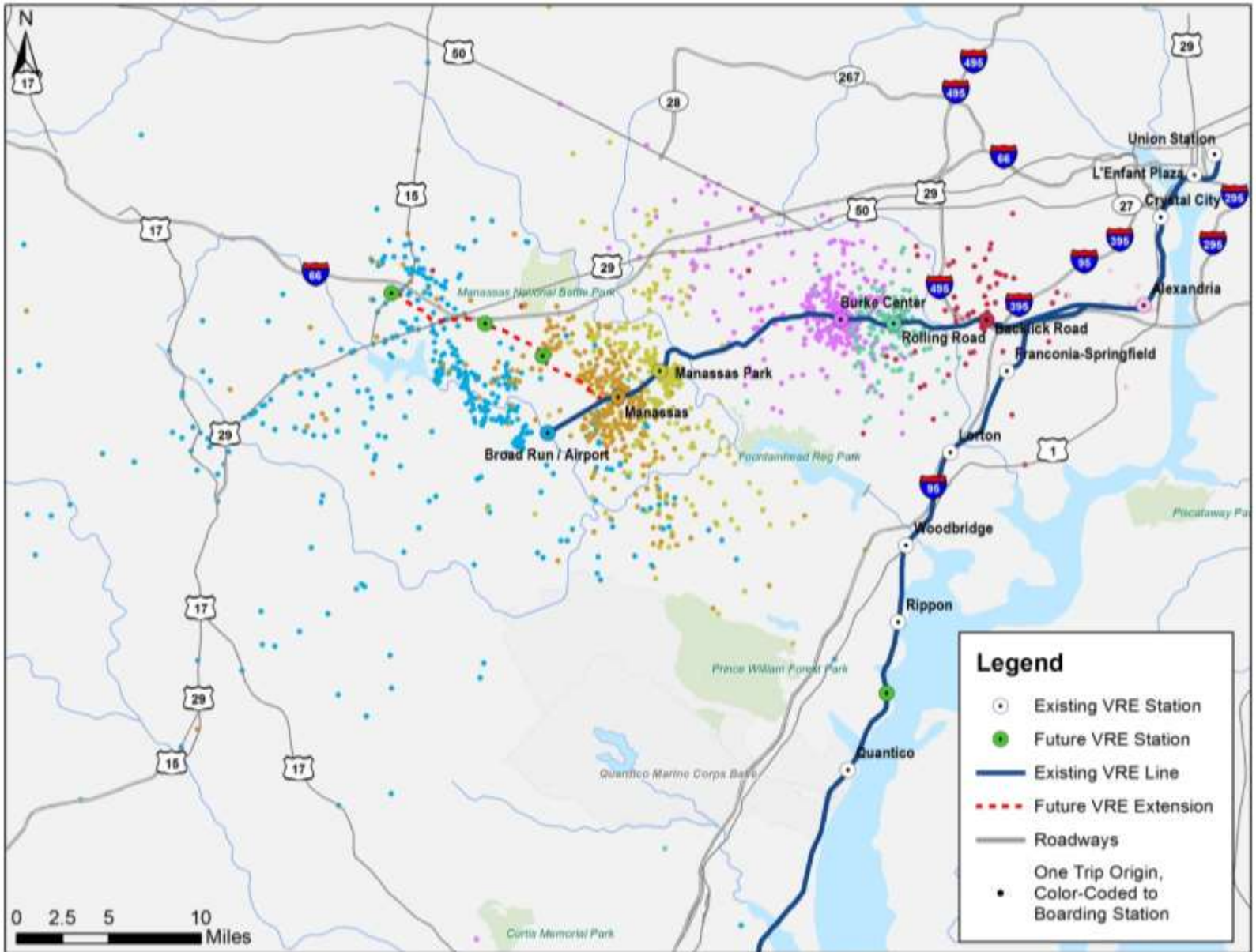
VIRGINIA RAILWAY EXPRESS
Gainesville-Haymarket Extension

Project Corridor



VIRGINIA RAILWAY EXPRESS
Gainesville-Haymarket Extension

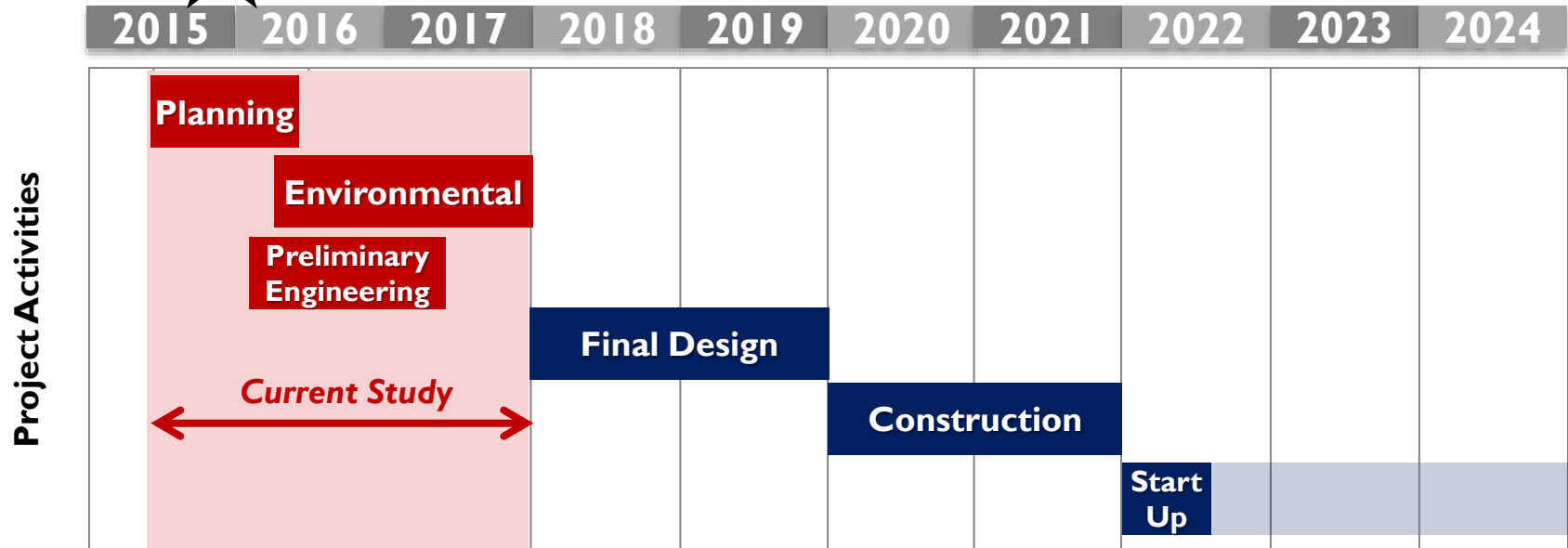
VRE Manassas Line Riders



Project Overview



We are here



Contingent upon Norfolk Southern approval and funding availability.



Schedule as of September 2015



VIRGINIA RAILWAY EXPRESS
Gainesville-Haymarket Extension



WHAT ARE THE KEY ISSUES?

What are the Key Issues?



Railroad Ownership: Norfolk Southern owns the Railroad and approves VRE service



Community Growth and Economic Development: The corridor is home to many existing communities and potential new residential, commercial, and mixed-use developments



Funding: The project will rely on a mix of federal, state, regional, and private funding sources



Environmental: Corridor is home to many natural and cultural resources, such as wetlands, historic sites, and parks



How Are We Going to Decide?

- Select the best route, service plan, and station locations
- Decision based on:
 - Freight and VRE interoperability
 - Ridership
 - Costs and funding
 - Project benefits
 - Community and environmental impacts



Next Steps

- Identify the **route** and **station location** alternatives that best serve the community and VRE riders
- Estimate the **cost** and identify possible **funding** sources
- Identify preliminary **impacts and benefits** of the project
- Come back to the public and stakeholders in Spring 2016 with specific alternatives for your input



Thank You. Your Input is Appreciated.

Doug Allen

VRE Chief Executive Officer

dallen@vre.org

Christine Hoeffner

VRE Manager of Project Development

choeffner@vre.org



www.vre.org/ghx



[@vre_ghx](https://twitter.com/@vre_ghx)



VRE GHX



ghx@vre.org



VIRGINIA RAILWAY EXPRESS
Gainesville-Haymarket Extension